

TURBOCAST 300™

POLYURETHANE BELT *fitting instructions*

Immerse belt in hot water for approximately 5 minutes to ease assembly

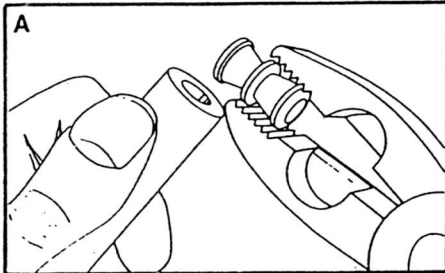


Diagram A

Remove belt from water and hold one end firmly. Using a pair of pliers grip the connector.

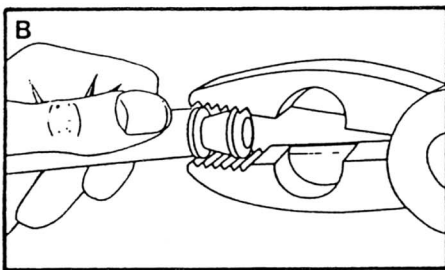


Diagram B

Fit the connector into the hollow centre of the belt by applying force and twisting the two from side to side. When the connector bites into the belt keep twisting until the end of the belt rests flush with the centre of the connector.

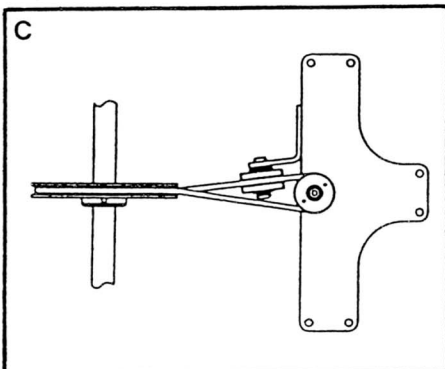


Diagram C

Position the belt onto the machine.
(See operating instruction manual page 8 for full installation description)

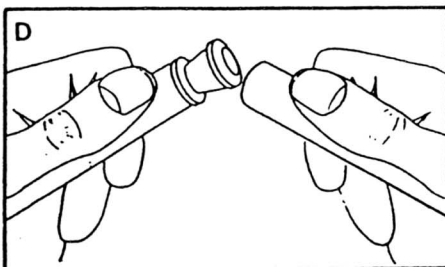


Diagram D

Hold each end of the belt firmly.

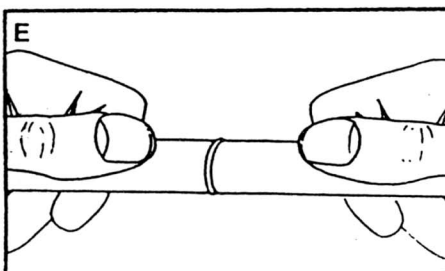


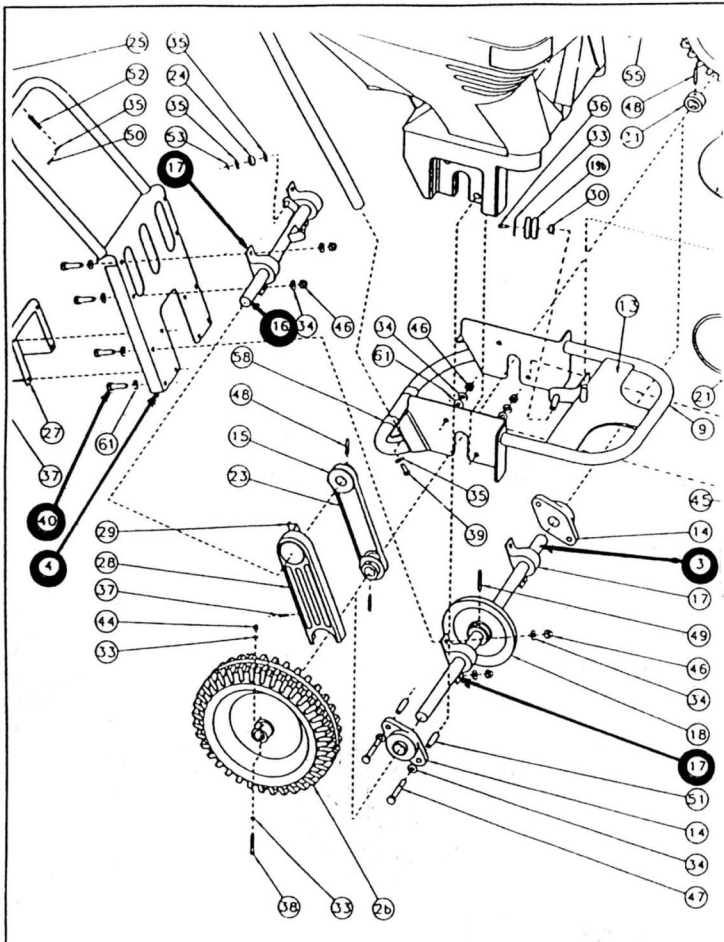
Diagram E

Repeat note 'b.'



TURBOCAST 300™

TIMING BELT fitting instructions



- a) Remove the wheel nearest to the timing belt.
- b) Remove the belt cover by removing the two screws.
- c) Loosen the two bolts (40) in the adjuster bearing (17) nearest the belt that fixes the **main axle shaft** (3) to the adjuster frame (4).
- d) Loosen the two bolts (40) in the adjuster bearing nearest the belt that fixes the **cam axle shaft** (16) to the adjuster frame (4).
- e) The play in the two shafts should now allow the belt to be fitted.
- f) Tighten the bolts fixing the main axle shaft to the adjuster frame.
- g) Tighten the bolts fixing the cam axle shaft to the adjuster frame.
- h) Replace the belt cover.
- i) Replace the wheel.

No.	Description
3	Main Axle Shaft
4	Adjuster Frame
16	Cam Axle Shaft
17	Adjuster bearing
40	Screw Hex Head M10

- A planned maintenance schedule of regular inspection is recommended, replacing components as necessary.
- Replacement components are available direct from GLASDON.
- GLASDON cannot be held responsible for claims arising from incorrect installation, unauthorised modifications or misuse of the product.

 **Glasdon** AND CRUISER TURBOCAST 300™ ARE TRADEMARKS OR REGISTERED TRADEMARKS OF GLASDON GROUP OR ITS SUBSIDIARIES IN THE U.K. AND OTHER COUNTRIES

Issue 3 Nov. 2005 Stock no. C000/0192

© Copyright Nov. 2005

Glasdon reserve the right to alter specification without prior notice.